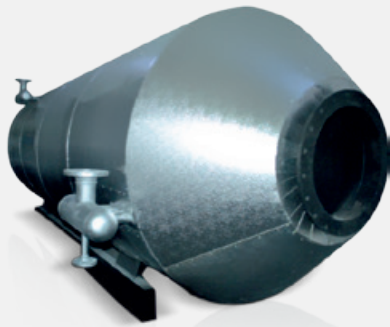


# WASTE HEAT BOILERS

## Smoke Tube Waste Heat Boilers



- \* Generation of steam, superheated water and hot water at requested pressure for turbines, furnaces, gas and liquid fueled motor waste gases
- \* Heat and electricity generation using the energy from high temperature waste flue gas
- \* Project specific design solutions suitable for process data
- \* Material selection and design solutions suitable for chemical and physical properties of the waste gas
- \* Ability to monitor and interfere with all auxiliary functions with PLC based control systems
- \* All necessary equipment required for the system such as economizer superheater and damper (Optional)
- \* Type design options such as ground type, or over the chimney or vertical type depending on system layout
- \* High Energy recovery with duct burner addition

**WHB-ESB Smoke Tube Waste Heat Steam Boiler**  
**WHB-HW Smoke Tube Waste Heat Hot Water Boiler**  
**WHB-SHW Smoke Tube Waste Heat Superheated Water Boiler**



|             | WHB-ESB   | WHB-HW    | WHB-SHW           | V/WHB-HW  | V/WHB-SHW         | WHB-S   | WHB-DB  |
|-------------|---|-----------|-------------------|---|-------------------|---|---|
| Capacity    | Selected depending on motor flow rate and Temperature |           |                   | Selected depending on motor flow rate and Temperature |                   | Selected depending on motor flow rate and Temperature   | Selected depending on motor flow rate and Temperature |
|             |   |           |                   |   |                   | Selected depending on turbine flow rate and Temperature |   |
| Design      | Cylindrical   |           |                   | Prismatic   |                   | Prismatic   | Cylindrical   |
|             | Horizontal  |           |                   | Vertical  |                   | Vertical (Economizer, Evaporator Superheater Units)     | Horizontal  |
|             | Smoke Tube  |           |                   | Water Tube  |                   | Water Tube (Finned pipe, serrated pipe)                 | Spiral Coiled   |
| Type        | Without Burner  |           |                   | Without Burner  |                   | Without Burner  | Without Burner  |
|             | Waste Gas Heat  |           |                   | Waste Gas Heat  |                   | Waste Gas Heat  | Waste Gas Heat  |
| Steam/Water | Steam   | Hot Water | Superheated Water | Hot Water   | Superheated Water | Steam /Superheated Steam                                | Superheated Oil                                       |
| Control     | Erensan PLC   |           |                   | Erensan PLC   |                   | Erensan PLC   | Erensan PLC   |
|             | Erensan HMI   |           |                   | Erensan HMI   |                   | Erensan HMI   | Erensan HMI   |